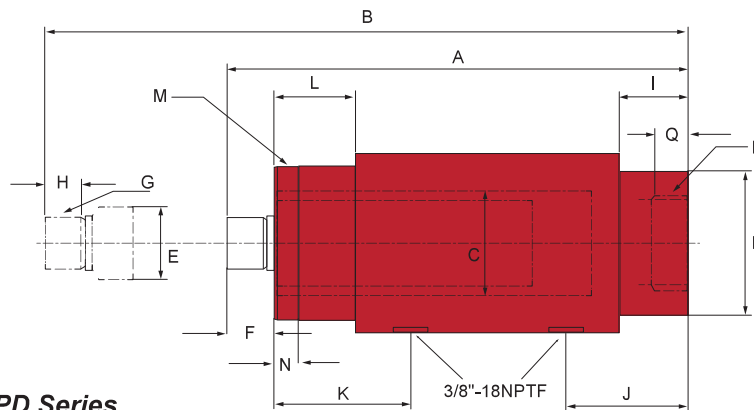


# Precision Double Acting Cylinders


HPD Series - High-Cycle Fixtured Application



HPD Series

\*Note: Precision double acting cylinders do not come with couplers.

- Provides hydraulic power for both extend and retract
- Designed for high cycle production applications
- High strength steel construction from gun drilled solid bar
- Plunger wiper seals keep dirt and contamination out
- Clevis eye attachments are available
- Maximum working pressure: 10,000 psi / 700 bar



**Related Product: Hoses**

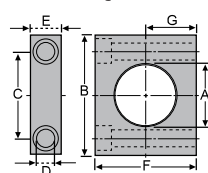
We offer a variety of hoses, fittings, lengths and materials.

pg 67

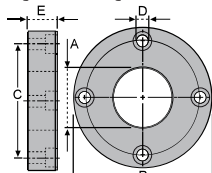
Cylinder Capacity	Model Number	Push Effective Area (cm <sup>2</sup> )	Pull Effective Area (cm <sup>2</sup> )	Collapsed Height A (mm)	Extended Height B (mm)	Cylinder Bore Dia. C (mm)	Outside Dia. D (mm)
9 Tonne 80 kN	HPD0906	11.4	6.5	350	505	38	64
	HPD0910	11.4	6.5	452	709	38	64
16 Tonne 142 kN	HPD1606	20.3	10.1	389	548	51	76
	HPD1610	20.3	10.1	490	750	51	76

Model Number	Plunger				Base to Inlet Port J (mm)	Top to Return Port K (mm)	Collar					Weight (kg)
	Dia. E (mm)	Protrusion F (mm)	Thread G	Thread Length H (mm)			Length L (mm)	Thread M	Thread Length N (mm)	Int. Base Thread P	Int. Base Thread Length Q (mm)	
HPD0906	25	25	3/4"-16N	19	38	56	38	2"-12N	15	1-11/16"-18N	35	6.6
HPD0910	25	25	3/4"-16N	19	38	56	38	2"-12N	15	1-11/16"-18N	35	8.4
HPD1606	36	29	1 1/8"-12N	25	54	73	54	2 3/8"-16N	25	2-3/16"-16N	41	10.0
HPD1606	36	29	1 1/8"-12N	25	54	73	54	2 3/8"-16N	25	2-3/16"-16N	41	12.8

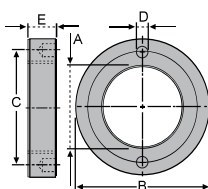
Base Mounting - CEBN



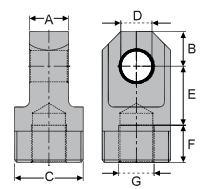
Flange Mounting - CEFN



Retainer Nut - CEN



Clevis Eye - CED



## Accessories for HPD Cylinder

By attaching these accessories to a HPD cylinder, you gain the ability for pull applications. For use with the 9 or 16 Tonne HPD cylinders only.

Model Number	Dimensions (mm)						
	A	B	C	D	E	F	G
CEBN09	50.8	101.6	73.2	13.5	25.4	82.5	44.5
CEBN16	66.8	130	95.5	19.5	35	101.6	52.3
CEFN09	50.8	121	98.6	10	25.4	-	-
CEFN16	66.8	143	115.8	13.5	35	-	-
CEN09	2"-12N	76	63.5	7	12.7	-	-
CEN16	2-3/8"-16N	92	79.2	7	19	-	-
CED09	25	23	1-11/16"-16N	19	33	24	3/4"-16N
CED16	32	28	2-3/16"-16N	25	48	30	1 1/8"-12N